

Radiolabs

Wireless & Beyond

Installation Guide for Radiolabs USB Wifi Antennas/Adapters



PLEASE READ BEFORE ATTEMPTING INSTALLATION

Thank you for purchasing a RadioLabs USB wireless networking product. This document will guide you through the steps to install the software or drivers necessary for your RadioLabs USB Wifi Antenna or Adapter on your computer.

These instructions are for:

WaveRv - Wireless Rv Solution (purchased after June 10th 2009)

Wave Magnum - High Power USB Wifi

O2Boost - Directional USB Wifi Antenna

The Seed – Plug and Go USB Wifi System

WaveRv Marine - Wireless Marine System (purchased after May 28th 2009)

O2Connect - High Power Directional USB Panel (purchased after May 28th 2009)

This guide and the included software are not compatible with the WaveRV II Long Range USB Adapter.

Please note that you will need a USB 2.0 port to utilize any of the RadioLabs USB Wifi Adapters/Antennas listed above.

Installation Instructions for Windows PCs

The Windows software included in this CD or .zip archive is compatible with the following versions of Windows:

- Windows 98 SE
- Windows Me
- Windows 200
- Windows XP
- Windows Vista (32 & 64-bit*)

The screenshots included in this guide are from the Windows XP version of Windows.

Please note that things may appear slightly different on your system depending on your version of Windows. However, the installation steps will be similar regardless of your Windows version.

***The following instructions are not compatible with Windows 64-bit systems. Drivers are included with this CD or .zip archive for Windows 64-bit systems. However, the installation program and software utility are not compatible with 64-bit systems (i.e. Windows Vista 64-Bit). Instructions for installation are included starting on page. 10**

Note: Do not insert the USB connector for your RadioLabs USB Wifi Antenna/Adapter into your PC until prompted.

Before installing your RadioLabs device, you will need to disable or disconnect any wireless devices currently operating on your PC. This includes integrated wireless cards, PCI adapters or external USB adapters.

(This step is not necessary on computers running Windows Vista. It is, however, recommended to avoid confusion as to which device's signal you are viewing if using the "Connect to a Network function" to view and connect to wireless networks)

Your PC does not need an existing wireless card or built-in wifi adapter to utilize any RadioLabs USB Wifi Antenna or Adapter. All of RadioLabs' USB Wifi Antennas/Adapters have a built-in wireless card that takes the place of your existing wireless network connection.

If your PC does not have a switch to disable your internal wireless card or external wifi device to disconnect, you will need to use "Network Connections" to disable the connection.

Windows XP Users:

Click "Start" > "Control Panel" > "Network Connections"

Windows Vista Users:

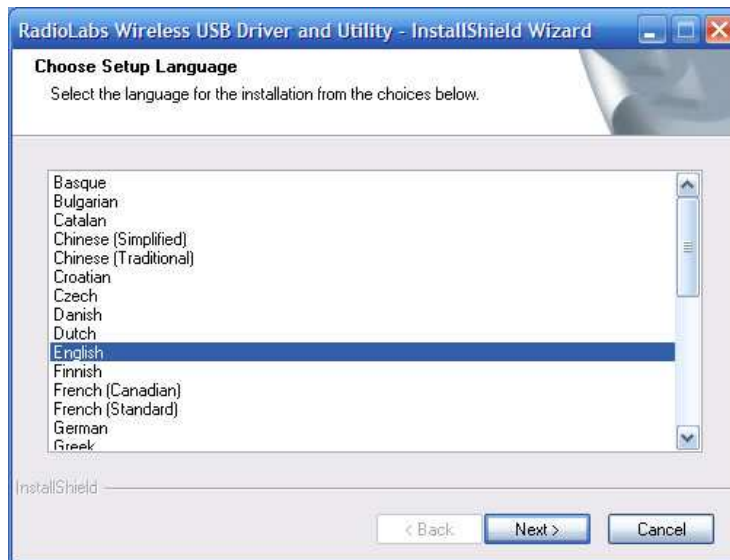
Click "Start" or "Windows Logo" > "Control Panel" > "Network And Sharing Center" > "Manage Network Connections"

Once in the Network Connections window, you need to select the Wireless Network Connection, right-click and select "Disable".

If you wish to use your internal wireless card in the future, just repeat the above steps and select "Enable"

If the Autorun utility has not automatically run, you will need to double-click the “**setup.exe**” file in the root or base directory of this CD or .zip archive. This will run the InstallShield Installation Utility and install the “RadioLabs USB Wireless LAN Utility and Driver” for your RadioLabs USB Wifi Adapter or Antenna.

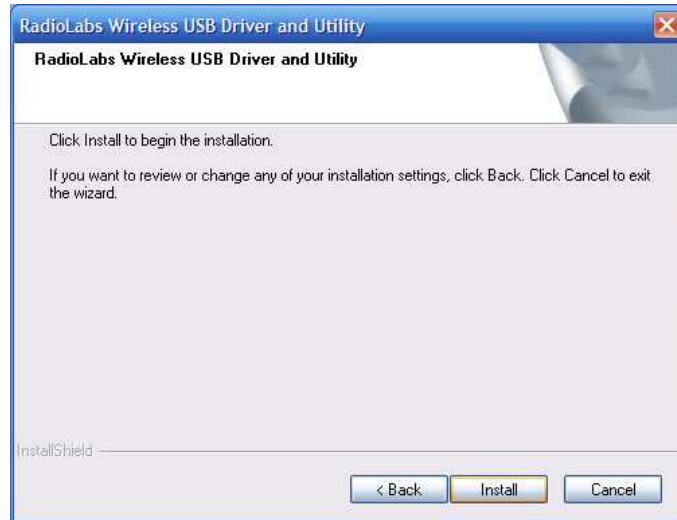
Select your preferred language and click Next



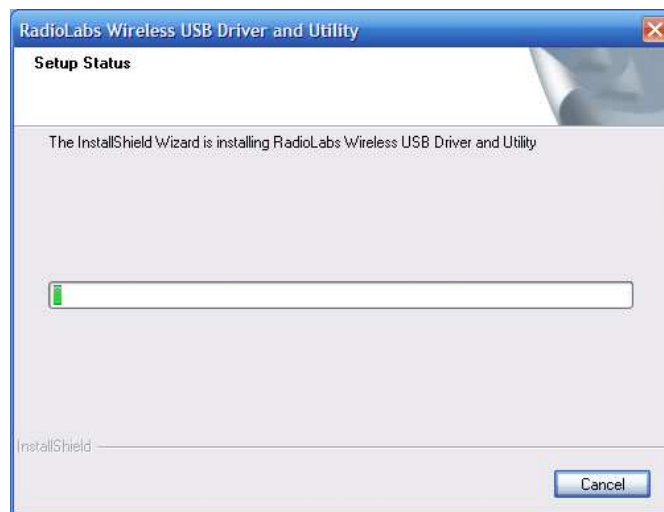
Select Next to continue the installation.



Click Install to begin installing the RadioLabs Wireless USB Utility



Wait for the installation wizard to load...

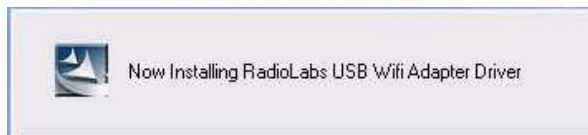


Click Continue Anyway to continue installation.

(Programmer's Note: This software will not impair the correct operation of your system)



InstallShield is now installing the necessary drivers.



Select Finish to complete the driver installation.



At this point, the RadioLabs Wireless USB Utility has been installed. You can now insert the USB connector on your RadioLabs USB Wifi Adapter/Antenna into your PC's USB port.

(If you have the Wave Magnum High Power USB Wifi Adapter, you will need to connect the Mini-B USB end of the included cable to the Wave Magnum and then connect the larger USB connector to your PC's USB port.)

This may (depending on your operating system) trigger a "Found New Hardware" Wizard which will prompt you to install drivers specific for your device. If this does not appear, please skip to page 9.

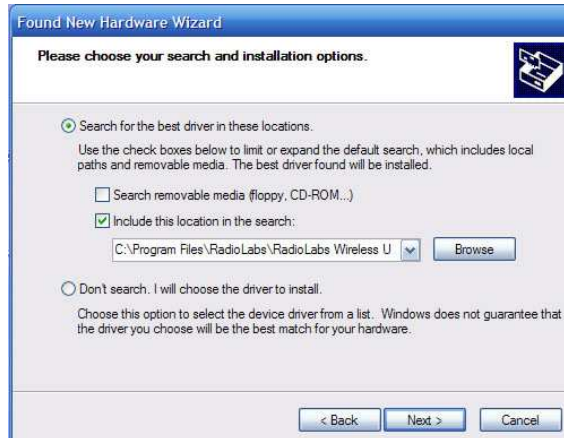
Select No, not this time and click Next



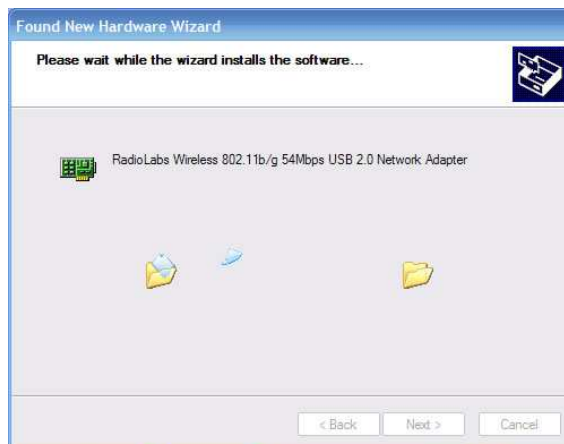
Select Install from a list of specific location (Advanced) and click Next



Make sure that "Search for the best driver in these locations" and "Include this location in the search" are selected, and then click Next



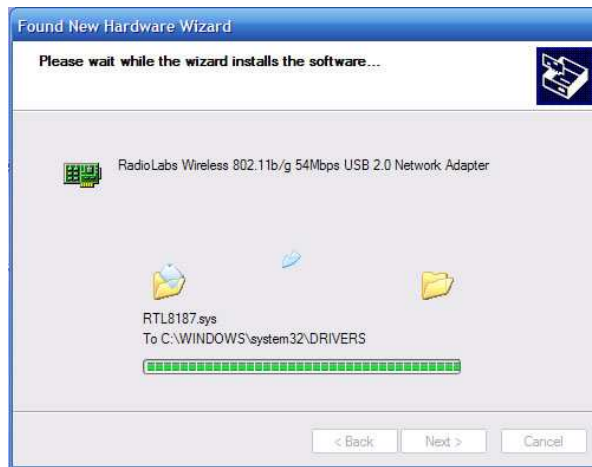
The driver software is being installed...



Click Continue Anyway to continue installation.



The wizard is completing the installation.



The wizard has finished installing your driver software and your RadioLabs USB Wifi Adapter/Antenna is ready to use. Click Finish to complete the installation and close the Found New Hardware wizard.



Your RadioLabs USB Wifi Adapter or Antenna is now installed and ready to use. Please refer to the RadioLabs USB Device User Manual for instructions on how to use the RadioLabs Wireless USB Utility.